



**AT THE  
HEART  
OF EVERY  
PROCESS...**

# AT THE HEART OF EVERY PROCESS...

ARE PUMPS MADE WITH QUALITY, EXPERIENCE AND INNOVATION.

Meet the new Unibloc Hygienic Technologies



# UNIBLOC<sup>®</sup>

Hygienic Technologies



Products that are proven under pressure every time, every day, on every line, with less downtime

Hygienic assurance, thanks to Unibloc's patented FoodFirst technology

Our relentless focus on lowering Total Cost of Ownership (TCO) by relying on design innovation and our product offerings' outrageous reliability

Our philosophy for embracing every deadline with a solve-it-now imperative

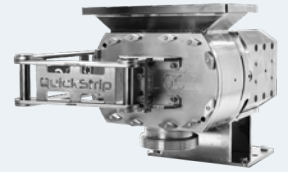
**UNIBLOC**  
PUMPS

For almost 40 years, **Unibloc** has defined quality in positive displacement pumps with innovations that have quickly become industry standards in demanding food and hygienic applications:

Seamless pump housings fully machined from solid steel

QuickStrip® – tool-free disassembly and one-way re-assembly

FoodFirst pump designs that feature the industry's first patented Safety Swing Arm



**FLOTRONIC**  
ONE-NUT™ PUMPS

**Flotronic** pioneered One-Nut Air-Operated Double Diaphragm (AODD) pumps, changing the industry by providing:

Reduced downtime through simplified assembly/disassembly

Savings in easier maintenance and increased performance

Best-in-class low-impact air pump performance



**HYGENITEC**  
FLOW CONTROL

**Hygenitec** products enhance the core of the new UHT product line:

AODD Pumps

Bubble Traps

Drum Pumps

Oil Coolers

Sight Glasses

Strainers

Valves



**STANDARD**  
PUMP

For two generations, customers have relied on **Standard** industrial drum pumps for:

Precision design and quality construction

Designed to operate safely and effectively

Dependable and reliable solutions that work



### The UHT Commitment

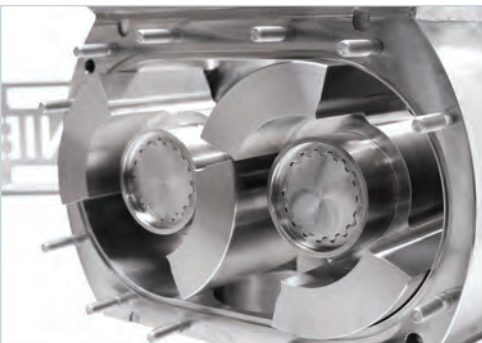
**Unibloc Hygienic Technologies** is an industry leader in precision-engineered positive displacement pumps, air-operated double diaphragm pumps and drum pumps, as well as valves, strainers, bubble traps, oil coolers and sight glasses, under the Unibloc, Flotronic, Hygenitec, and Standard Pump product lines. All products focus on reducing the total cost of ownership through safe, efficient, easy-to-maintain products that help customers fight downtime, achieve a lower cost of operation, and meet deadlines with confidence.



# TOUGHER THAN THE REST

## Only Unibloc Pump Offers QuickStrip® FoodFirst Technology

- **Minimizes foreign material risk** – no plastics or rotor bolts for maximum x-ray and metal detectability
- Unique **Safety Swing Arm** design enhances worker safety
- Simple, repeatable **one-way assembly**
- **Tool-free design** reduces damage during daily sanitation cycles



Sanitary applications pose their own set of challenges for pumps and equipment, but the stakes are even higher when it comes to meat and poultry processing. That's why reliability, performance, and the ability to withstand daily sanitation are essential. Simply put, you need a pump that is **TOUGHER THAN THE REST**.



# ELIMINATE FOREIGN MATERIAL

## THE PROOF IS IN OUR PATENTS

The secret to success lies in having the best technology – and as you can see, we’ve got the patents to prove it.

### QUICKSTRIP® FOODFIRST SERIES PUMPS

QuickStrip minimizes foreign material and maximizes food and worker safety, a top priority among food processing professionals. With fewer parts, one-way assembly, and several safety features, the FoodFirst pump is less susceptible to damage during cleaning, reducing the risk of foreign material entering the process stream.

### QUICKSTRIP®

Rotor technology offers the ultimate in fast, no-tools-required cleaning and maintenance. This innovative design simplifies the cleaning process and significantly minimizes wear and tear from daily sanitation and maintenance, lowering the cost of ownership. One-way assembly assures proper setup after sanitation, every time.

### QUICKSTRIP® MXD METAL & X-RAY DETECTABLE ROTORS

Building on the time-proven QuickStrip® Rotor Technology, QuickStrip® MXD offers both metal and X-ray detectability, assuring product safety for the most demanding applications.

### DURACORE® MXD ROTORS

DuraCore® rotors combine QuickStrip® rotor technology with the uncompromised strength of stainless steel. The patented DuraCore® rotors utilize metal and X-ray detectable components and a stainless-steel center, merging durability with affordability.

### POLYFLEX® MXD ROTORS

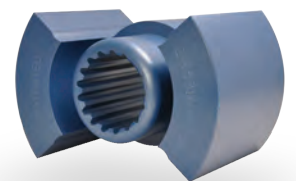
PolyFlex® rotors offer an easy-to-remove and easy-to-clean rotor design. Composed of food-grade metal and X-ray detectable plastic, PolyFlex® rotors are durable, long-lasting and have been the reliable standard for meat processing applications for nearly 20 years.



QuickStrip®  
MXD Rotor



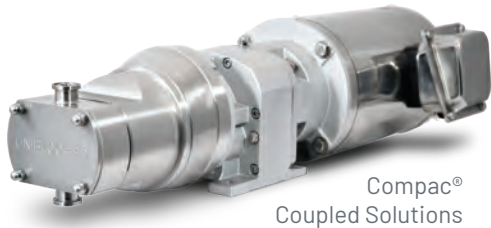
DuraCore®  
MXD Rotor



PolyFlex®  
MXD Rotor

# ROTARY LOBE PUMPS

- **Fully machined** stainless or coated aluminum bearing housing options
- **Compac® FMS (Flange Mount System)** allows pumps to easily direct-mount to motors or gear reducers
- **Port sizes from 3/8" to 8"**
- **Capacity up to 480 GPM** (1.815 LPM)
- **High temperature** compatible up to 400°F
- **High pressure** pumps available
- **Bearing housing** material and finish options include stainless steel, painted steel, and multicoated aluminum
- **Multiple rotor designs/options** available to meet specific applications



Compac®  
Coupled Solutions



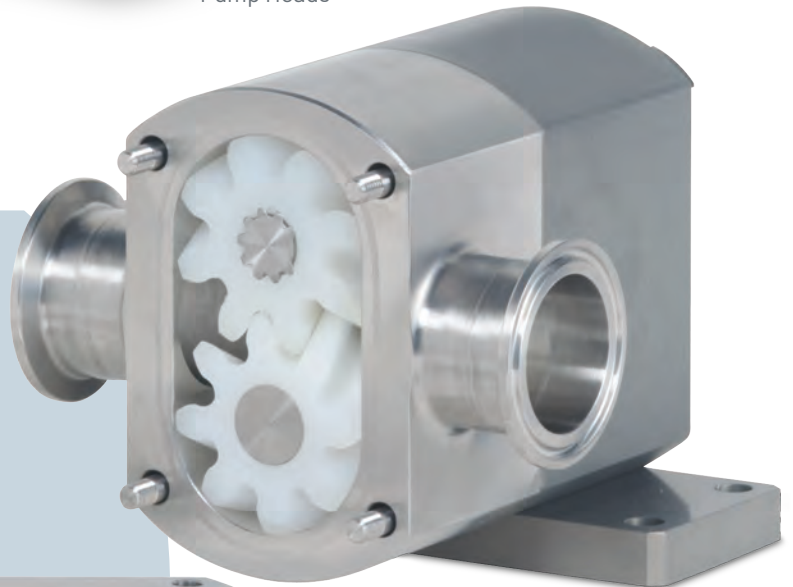
Jacketed  
Pump Heads



All Stainless  
PD Pump

# SANITARY GEAR PUMPS

- **Non-pulsating flow**
- **Helical cut gears** for smooth, accurate, and quiet operation
- **Sanitary 3A design**, Third Party Verification (TPV)
- **Sanitary tri-clamp porting** in horizontal or vertical orientation
- **Capacity up to 36 GPM** (137 LPM)
- **Port sizes from 1/2" to 2"**
- **Interchangeable gear housings** for multiple capacities and products
- **Multiple gear material options**
- **Multiple pump seal options** for different customer needs
- **Compac® FMS (Flange Mount System)** allows pumps to easily direct-mount to motors or gear reducers



Unibloc-GP with Compac® FMS



Unibloc-GP  
Smooth Flow Gears

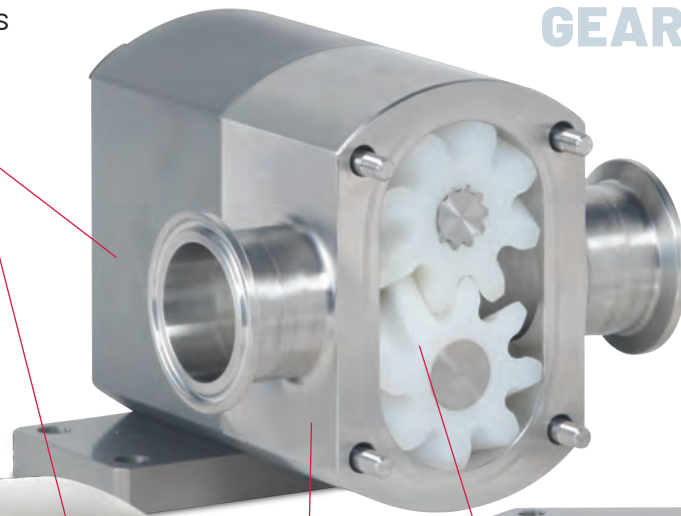


# SIMPLE, SAFE FOOLPROOF ASSEMBLY

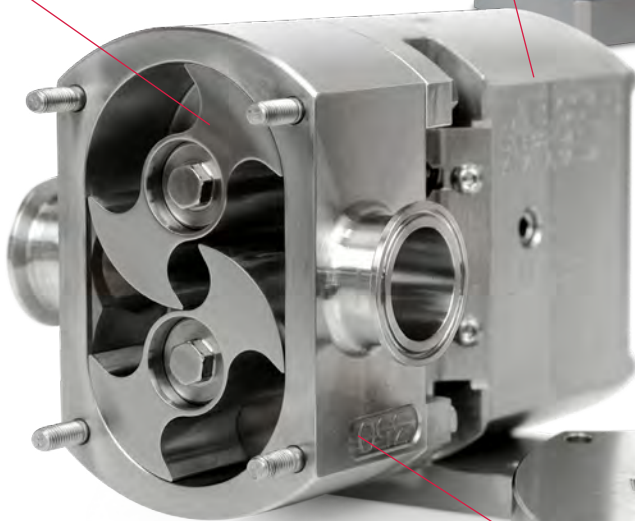


**Fully-machined bearing housings** with rounded tops create no flat surfaces, allowing water to drain off

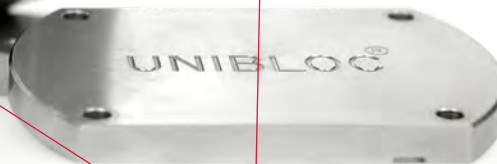
## SANITARY GEAR PUMP



**Rotor design** for low shear and consistent flow



**Helical gears** provide smooth, quiet operation and low pulsation



## ROTARY LOBE PUMP

**316L stainless steel pump heads** feature no seams, pockets, or crevices that can trap product and bacteria

## THE FLOTRONIC PUMPS RANGE

A range of air-operated Double Diaphragm pumps with:

- Multi-million cycle 'short stroke' one-piece bonded diaphragms
- 15 minute 'in-line' maintenance
- Any inlet/outlet connection you require
- Full range of low price spares ex-stock
- Worldwide after-sales service

Use Flotronic Double Diaphragm Pumps for BOTH simple transfer AND continuous duty process applications using PTFE faced multi-million cycle diaphragms as standard.

A proven concept used over the last thirty years, you'll find our pumps in an incredibly diverse range of industries and applications where the ability to transfer materials is a requirement.



## THE 'ONE-NUT' CONCEPT

The 'inside out' concept allows fluid to pass 'between the diaphragms', directly through the centre of the pump. Air pressure operates 'on the outside'. The benefits are:

### LONGER LASTING DIAPHRAGMS

An optimised stroke length allows use of thicker/ stronger PTFE faced diaphragms standard. One-Piece Nitrile and EPDM diaphragms are also available.

### FASTER MAINTENANCE

Fifteen minutes to change diaphragms by the removal of just one nut and without disconnecting the pump from the pipework.

### LOWER COST SPARES

Less than half the quantity of spare parts than any equivalent pump and interchangeability of most air system parts between the different pump styles in our range.

Flotronic's unique 'One-Nut' range of air-driven Double Diaphragm Pumps are fully compliant with the current ATEX Directive.



ATEX





# WE OFFER A CHOICE OF BOTH WETTED AND NON-WETTED MATERIALS

## WETTED PARTS

Pump Body and Manifolds in Aluminium, Polypropylene, PVC, PVDF, 316 Stainless Steel, Hastelloy®, other exotic metals and solid virgin or anti-static PTFE. Diaphragms, balls and seals in PTFE, EPDM or Nitrile rubber diaphragms, balls and seals.

## NON-WETTED PARTS

Air domes/Footplates: - Version E = Painted Carbon Steel. Version S = Stainless Steel. (Air valves available in Aluminium, Polypropylene, PTFE or Stainless Steel).

## FLOTRONIC PUMPS DON'T NEED:

### CLAMP BANDS

We utilise self-aligning bead seals integral with the diaphragms.

### COMPLICATED AIR MECHANISMS

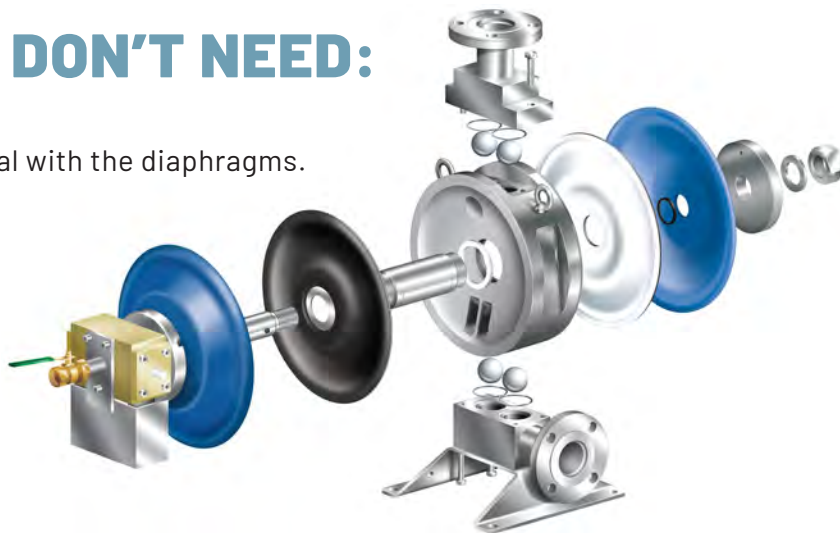
We simply bolt-on an air valve.

### LUBRICATION

We use self-lubricating PTFE parts.

### REMOVAL FROM PROCESS LINE

Diaphragms can be replaced in-situ.



## WHY NOT TRY A 'ONE-NUT' CONCEPT DOUBLE DIAPHRAGM PUMP

If you've got air on site consider this:

- Self-priming – will lift up to 3.6m/12ft dry
- Very high viscosity capability
- Can run dry
- Low shear
- No lubrication
- Wide choice of material
- PTFE diaphragms as standard
- Ultra clean
- Variable speed or pressure
- Fifteen minute maintenance 'in line' Customised pumps a speciality
- Can stop/re-start against a closed/open valve without pressure relief or damage (no by-pass required)

# HYGIENIC FLOW CONTROL PRODUCTS

## CUSTOMERS RELY UPON

Hygenitec offers customers precision-engineered hygienic pumps, valves, strainers, bubble traps, sight glasses, and other process components. Our Hygenitec product line provides a wide range of flow management solutions that ensure top performance from your process system and are designed to help you fight downtime.

- **Check valves** and **pressure relief valves** designed for a variety of applications and crafted for easy maintenance
- **Sight Glasses** to provide clear views into your process
- **Bubble Traps** built with electropolished 316L stainless steel material and a wide variety of sizes and port configurations to fit your application
- **Strainers** designed with pharmaceutical grade quality with industrial strength durability
- **AODD Pumps** ideal for food and beverage, poultry processing and personal care industries
- **Drum Pumps** are constructed from stainless steel to provide safe and hygienic solutions for transferring ingredients from drums and intermediate bulk containers
- **Oil Coolers** for transport operations to ensure maximum performance during the long haul



# STANDARD PUMP

## FLUID HANDLING EQUIPMENT

As with all UHT brands, Standard Pump products adhere to stringent safety guidelines and are committed to providing high-quality equipment – so when you need fluid handling for your applications, you can have confidence in the safety and performance of our Standard Pump industrial drum pumps:

- **Industrial Batch Control System** measures and dispenses pre-set batches of chemicals from drums and tanks
- **MINI Pump** for transferring corrosive chemicals from small drums and storage vessels
- **Pump Motors** with explosion-proof, open drip-proof, air motors and TEFC (Totally Enclosed Fan Cooled) models
- **Pump Tubes** available in polypropylene, PVDF, CPVC, stainless steel and aluminum
- **Pump Accessories** ranging from hand nozzles to barrel adapters to fume barriers





## Industries Served



Bakery and Confection



Beauty & Personal Care



Beverages & Spirits



Dairy



Food Processing



Meat & Poultry



Pharmaceutical & Biotechnology



Transportation



Industrial

## Brands and Products



- Lobe Pumps
- Gear Pumps
- Compac® Pumps
- Labtop® Pump System



- AODD Pumps
- Barrel Unloading Systems



- Bubble Traps
- Sight Glasses
- Strainers
- Valves
- Drum Pumps
- Batch Control Systems
- AODD Pumps
- Oil Coolers



- Industrial Drum Pumps
- Industrial Batch Control Systems

When it counts, count on Unibloc®.

Unibloc Hygienic Technologies provides a broad portfolio of powerful solutions for companies around the world.



[unibloctech.com](http://unibloctech.com)



Copyright © 2022 Unibloc Hygienic Technologies US, LLC