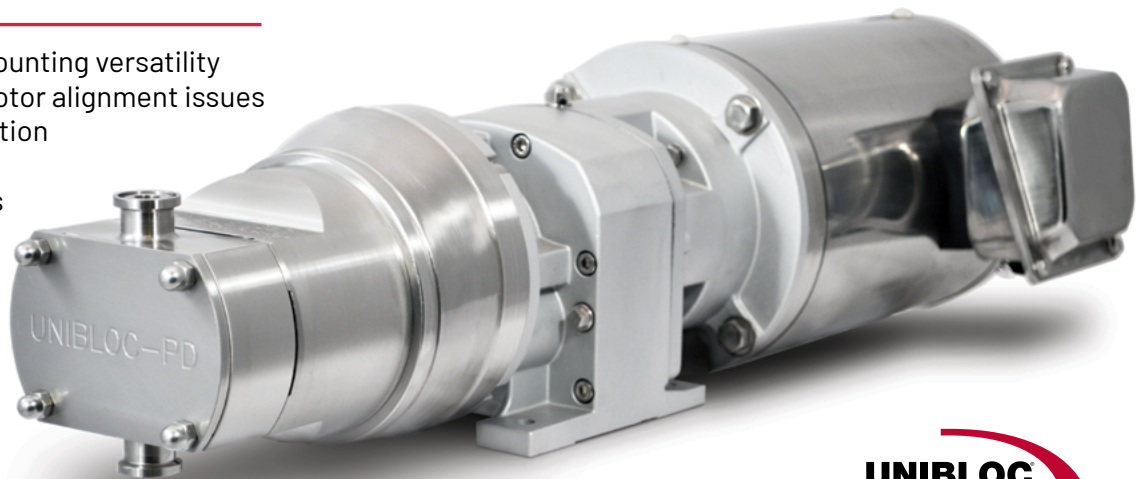


COMPAC[®] COUPLED SOLUTIONS

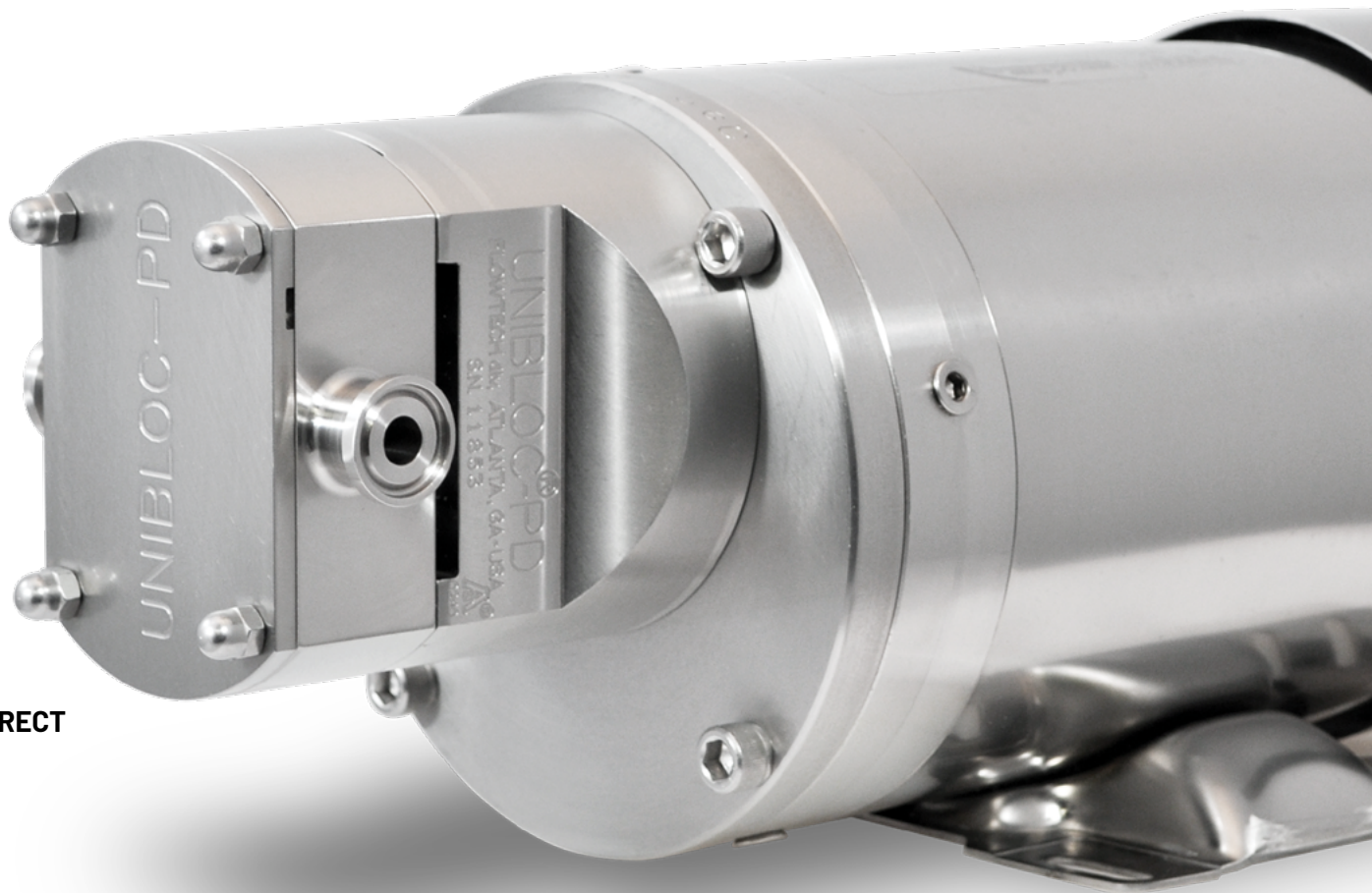
When it counts,
count on Unibloc[®].

- Horizontal or vertical mounting versatility
- Eliminates pump and motor alignment issues
- Quiet, low decibel operation
- Safe design with no accessible moving parts



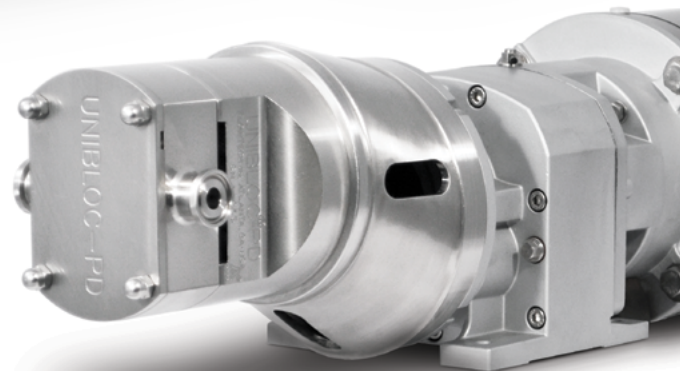
UNIBLOC® COMPAC® SERIES PUMPS

The Unibloc® **Compac® Series** coupled pump is designed **FOR CONFINED SPACE APPLICATIONS IN THE FOOD/BEVERAGE INDUSTRY**. Offered in two versions – Compac Direct and Compac Flex – they have an innovative design that provides for easy mounting, perfect pump motor alignment, smooth and quiet operation and a small footprint.



DIRECT

The Compac Series feature Unibloc hygienic technology. Known for their dependability and uncompromised sanitary design, Unibloc products excel in demanding applications in the food, beverage, pharmaceutical, dairy, chemical, and cosmetic industries.



DEPENDABLE, UNCOMPROMISED SANITARY DESIGN

BENEFITS FOR DEMANDING APPLICATIONS

HIGH PERFORMANCE AND EFFICIENCY IN A SMALL FOOTPRINT

With just four bolts for mounting the entire pump and motor assembly, the Compac design is ideal for OEMs seeking a small footprint to incorporate in their designs. Minimum assembly work is required, with just a few tools for easy mounting and integration. In addition, the Compac Series operates at high efficiencies.

FLEXIBLE OUTPUT AND MOUNTING APPLICATIONS – HORIZONTAL OR VERTICAL

The Compac Flex is designed with the pump mounted to a gear reducer on the motor, so the pump can be fine-tuned from 1200 RPM down to 60 RPM, whatever the application requires. And, the unit operates in either horizontal or vertical positions, making it even more flexible for the customer on the plant floor or for integrating the Compac Series into whatever the OEM might require. Simply remove the four bolts, turn it 90°, and mount with far fewer components than competitive pump designs.

ELIMINATES PUMP AND MOTOR ALIGNMENT ISSUES

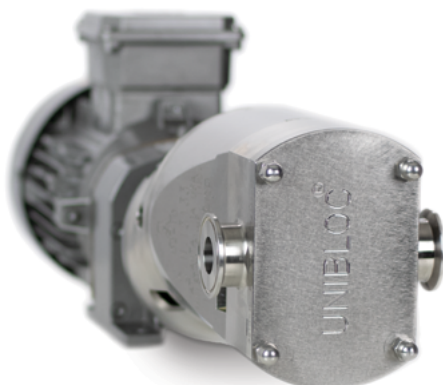
The Compac Series avoids the bearing and pump failures associated with improper motor-pump alignment. The unit's stainless-steel flange connects to the gear reducer for a perfect pump and motor alignment every time.

SAFE DESIGN WITH NO ACCESSIBLE MOVING PARTS

Unibloc's Compac design considers more than just functionality, durability and versatility, but also safety. All moving parts are housed within the flange to prevent access to moving parts. No coupling guard is required with a Compac Series.



FLEX



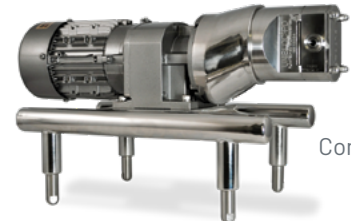
INTRODUCING COMPAC[®]

Unibloc Hygienic Technologies is proud to present the revolutionary Compac Series of coupled pump solutions. This innovative design delivers a user friendly, simplified pump system. From the unique and straight-forward design of the Compac Direct, to the unmatched versatility of the Compac Flex, the Compac Series offers a complete line of sanitary lobe and gear pumps for a wide range of industries and applications.

- **Compact design**
- Horizontal or vertical **mounting versatility**
- **Eliminates** pump and motor alignment issues
- **Safe design** with no accessible moving parts



Compac Direct



Compac Flex

Renowned for dependability and uncompromised sanitary design, Unibloc's Compac Series excels in food, beverage, pharmaceutical, dairy, chemical and cosmetic industries.

Pump Type	Pump Size	Availability		Port Size in	Displacement Gal/100 Rev	Max Capacity* GPM
		Direct	Flex			
Gear	GP200/07	X	X	0.5"	0.2	2.8
	GP200/10	X	X	0.75"	0.3	4.2
	GP275/22	X	X	1.0"	0.7	9.8
	GP275/38	X	X	1.5"	1.0	14.0
	GP300	X	X	1.0"	1.6	19.2
	GP350	X	X	1.5"	2.3	27.6
	GP375	X	X	2.0"	3.0	36.0
Lobe	PD200-0	X	X	0.375"	0.3	3.0
	PD200	X	X	0.5" or 0.75"	0.8	8.0
	PD250	X	X	0.75"	1.1	11.0
	PD275	X	X	0.75" or 1.0"	1.4	14.0
	PD300	X	X	1.0"	2.8	28.0
	PD350	X	X	1.5" or 2.0"	4.0	40.0
	PD400		X	1.5"	8.1	72.9
	PD450		X	2.0"	10.9	98.1

*Based on max motor speed

Unibloc Hygienic Technologies provides a broad portfolio of powerful solutions for companies around the world.



unibloctech.com

