

The simplest ideas are often the best

‘E’ Series

EHEDG Accredited pumps for
sanitary product transfer



Hygienic product transfer

For the ultimate in hygienic product transfer ...

... Flotronic Pumps' 'E' Series pump is hard to beat.

Tested to exacting performance standards by EHEDG (the European Hygienic Engineering & Design Group), the 'E' Series offers peace of mind for the food, beverage, dairy and pharmaceutical industries - and any environment or process where avoidance of product contamination is paramount.

Flotronic's 'E' Series comprises of pumps with 10" diameter diaphragms, ideal for customers with low to mid-range flow rate applications; while the 12" version offers flow rates as high as 500 litres per minute. Process connections from 1 1/2" to 3" are available.



Cleaning couldn't be easier

Flotronic Pumps' 'E' Series pumps have been designed with ease of cleaning for all product-contact and non-product contact parts firmly in mind. Featuring Flotronic's established and unique 'ONE-NUT' pump design which allows swift diaphragm access without disconnecting process pipework, the 'E' Series pump can be thoroughly cleaned and maintained in place (CIP).

The 10" 'E' Series pump has a support stand allowing rotation of the pump for easy and effective media draining. Gravity separates the ball valves from their seals in this inverted position and cleaning and other fluids easily drain away from the inverted delivery nozzle.

The 12" 'E' Series pump has check ball valve seats engineered with an added recess allowing drainage without inversion. This avoids the need to rotate a relatively large machine and lets the 12" 'E' Series pump remain in its normal operating position.

Reinforced Diaphragm option

Unique to Flotronic, the 'E' Series pump features diaphragms which are reinforced as standard. Reinforcing plates add support to the diaphragms and ensure that the pumps can withstand CIP/SIP pressures of up to 6 bar in the suction line. This means the pumps can be Cleaned in Place using fully automated CIP units incorporating external CIP pumps, without the need to bypass the pump.

Connections

All 'E' Series pumps are available with the option of BS, DIN or ISO hygienic connections.



Flotronic 'One - Nut' pumps - The simplest ideas are often the best

Flotronic 'E' Series

The benefits of Flotronic's 'E' Series pumps include:

- meeting EHEDG standards for sanitary product transfer
- standard finish of 0.8µm Ra or better on wetted surfaces with an electro-polished overall finish to aid pump cleaning
- 10" and 12" versions are EHEDG accredited
- Clean in Place design
- Reinforced diaphragms as standard
- BS, DIN and ISO hygienic connection options ensuring that hygiene standards are not compromised
- Process connections from 1½" to 3" are available
- Flotronic Pumps' 'ONE-NUT' technology for ease of maintenance.

All of which help you:

- reduce down time and cleaning costs
- maintain and even improve sanitary levels on site
- prevent wastage with less 'hold up' of product.

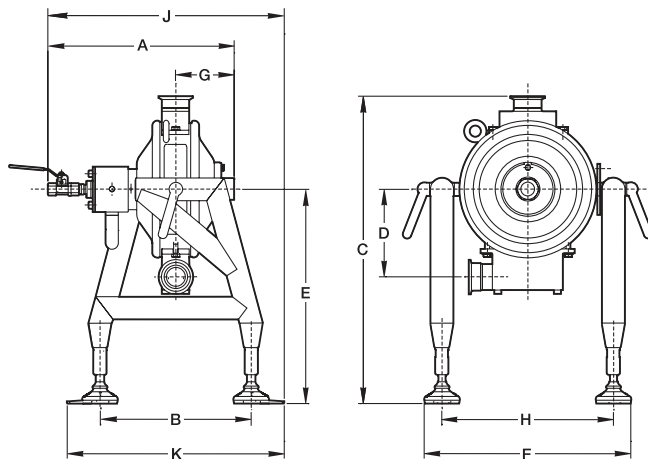
Applications:

- Dairy
- Food and Beverage
- Pharmaceutical
- Cosmetics/Personal care.



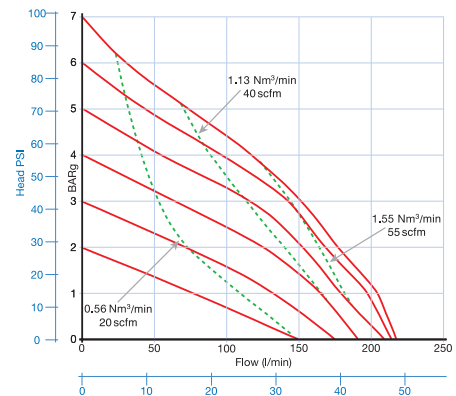
Flotronic's commitment to high quality management of the processes that create and control our products has been recognised in achievement of ISO 9001 accreditation, the internationally recognised standard for quality management of businesses.

Technical Data



Flow Rate 10" diameter diaphragm

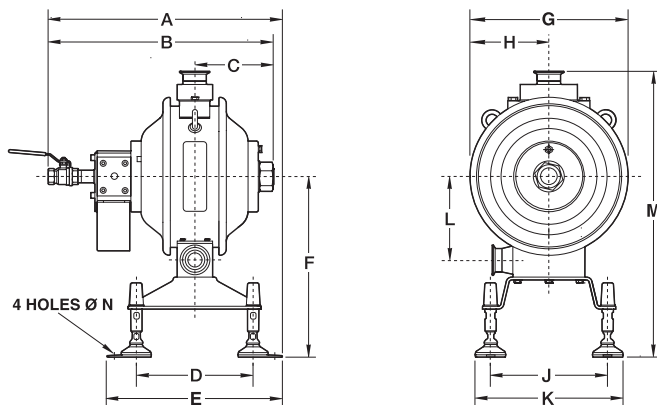
2"



| 'E' Series EHEDG Pump | | | | | | | | | | | | |
|-----------------------|-----|-----|-----|-----|-----|-----|-----|-----|-----|-----|-------|--------------------|
| Size | A | B | C | D | E | F | G | H | J | K | Wt/kg | Diaphragm Diameter |
| 2" | 345 | 280 | 570 | 162 | 397 | 383 | 108 | 318 | 438 | 402 | 36 | 10" |

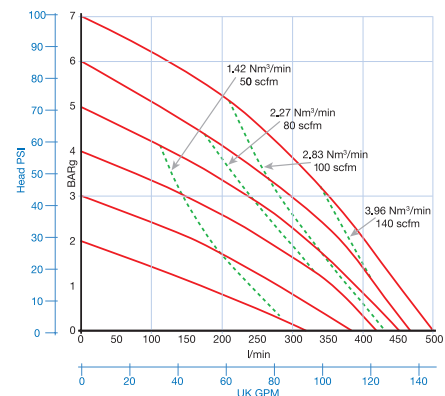
Maximum operating pressure 7.2 bar (105 PSIG)

Dimensions in mm



Flow Rate 12" diameter diaphragm

3"



| 'E' Series EHEDG Pump | | | | | | | | | | | | | | |
|-----------------------|-----|-----|-----|-----|-----|-----|-----|-----|-----|-----|-----|-----|----|-------|
| Size | A | B | C | D | E | F | G | H | J | K | L | M | N | Wt/kg |
| 1 1/2"/2"/3" | 495 | 479 | 170 | 343 | 372 | 389 | 340 | 123 | 250 | 313 | 180 | 616 | 15 | 73 |

Maximum operating pressure 7.2 bar (105 PSIG)

Dimensions in mm

Flotronic Pumps

Ricebridge Works, Brighton Road, Bolney, West Sussex RH17 5NA. UK

Tel: +44 (0)1444 881871 Fax: +44 (0)1444 881860

Email: sales@unibloctech.com www.unibloctech.com

For authentic Flotronic Pump spares go to: www.unibloctech.com



ATEX APPROVED PUMPS



Certificate No. 6597



'Flotronic' is a UK registered trade mark.

Specifications subject to change without notice.

Flotronic 'One - Nut' pumps - The simplest ideas are often the best