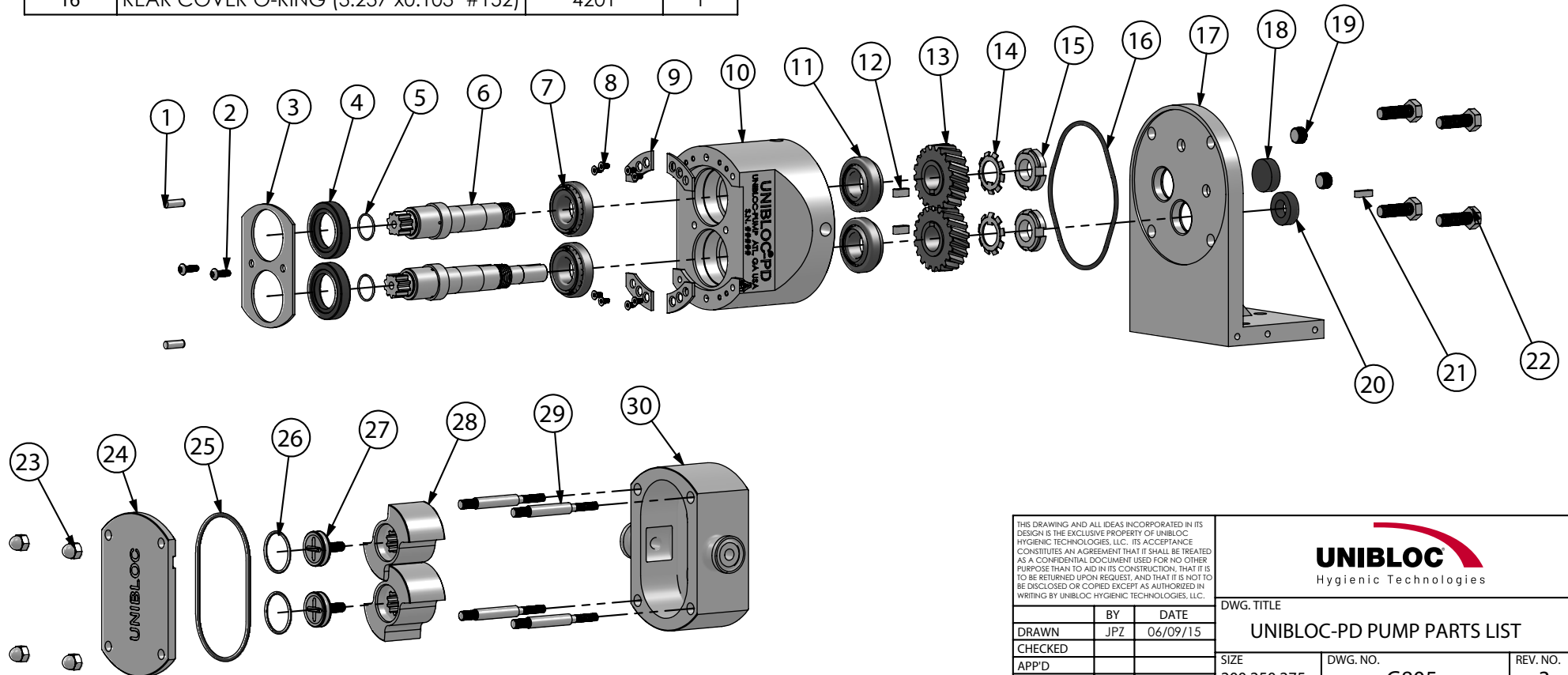


ITEM NO.	DESCRIPTION	PART NUMBER	QTY.
1	DOWEL PIN	DPM5x14	2
2	M5x10 BUTTON HEAD SCREW	BHM5x10	2
3	OIL SEAL RETAINER	3640	1
4	FRONT OIL SEAL	4105	2
5	SHAFT O-RING (16mmx1mm)	4203	2
6	SHAFTS	---	2
7	FRONT BEARINGS	3750	2
8	FLAT HEAD BOLT	FHBM3x6	8
9	SHIM PLATE	3646-075	4
10	BEARING HOUSING	3500	1
11	REAR BEARINGS	3750	2
12	SHAFT KEYFOR TIMING GEARS	4700	2
13	GEAR	3600	2
14	TAB WASHER FOR TIMING GEARS	4500	2
15	SLOTTED NUT FOR TIMING GEARS	4402	2
16	REAR COVER O-RING (3.237"x0.103" #152)	4201	1

ITEM NO.	DESCRIPTION	PART NUMBER	QTY.
17	BEARING HOUSING COVER	3551	1
18	REAR OIL PLUG	4101	1
19	DRAIN PLUG	---	2
20	REAR OIL SEAL	4100	1
21	SHAFT KEY FOR DRIVE	4701	1
22	M8x25 HEX BOLT	4300	4
23	M6 DOME NUT	4400	4
24	ROTOR HOUSING COVER	3200	1
25	FRONT COVER O-RING (2.987"x0.103" #151)	4200	1
26	ROTOR BOLT O-RING (0.799"x0.103" #117)	4213	1
27	ROTOR BOLT	3352	2
28	ROTOR	---	2
29	ROTOR HOUSING STUD	---	4
30	ROTOR HOUSING	---	1



CONTACT UNIBLOC-PUMP IF PART NUMBER IS NOT AVAILABLE

THIS DRAWING AND ALL IDEAS INCORPORATED IN ITS DESIGN IS THE EXCLUSIVE PROPERTY OF UNIBLOC HYGIENIC TECHNOLOGIES, LLC. ITS ACCEPTANCE CONSTITUTES AN AGREEMENT THAT IT SHALL BE TREATED AS A CONFIDENTIAL DOCUMENT USED FOR NO OTHER PURPOSE THAN TO AID IN ITS CONSTRUCTION, THAT IT IS TO BE RETURNED UPON REQUEST, AND THAT IT IS NOT TO BE DISCLOSED OR COPIED EXCEPT AS AUTHORIZED IN WRITING BY UNIBLOC HYGIENIC TECHNOLOGIES, LLC.

DRAWN	BY	DATE
JPZ	JPZ	06/09/15
CHECKED		
APP'D		
SCALE		

UNIBLOC Hygienic Technologies		
DWG. TITLE		
UNIBLOC-PD PUMP PARTS LIST		
SIZE	DWG. NO.	REV. NO.
200,250,275	G805	3
RELEASE DATE	SHEET 1 OF 2	
JUN. 21, 2021		